

GSM Antenna



Specifications Sheet

Part No.: 3-6081-010R000

Features :

Connector : I-PEX MHF Plug + 1.13 (Gray)

Cable Length : 56 cm

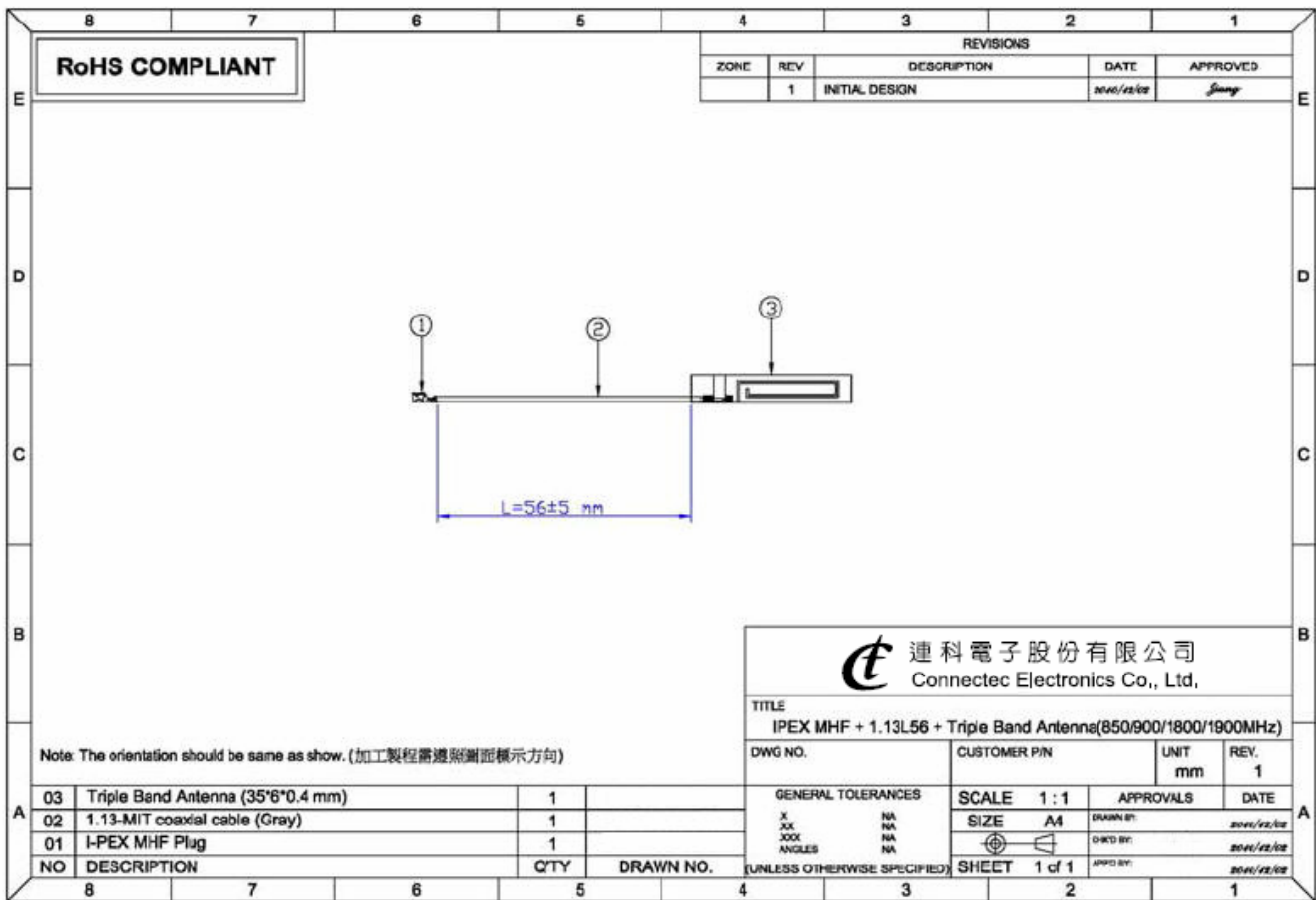
GSM Dimension : 35 x 6x 0.4 mm

Frequency Band : 850/900/1800/1900MHz

1. Summary :

Connector : I-PEX MHF Plug + 1.13 (Gray)
Cable Length : 56 cm
GSM Dimension : 35 x 6x 0.4 mm
Frequency Band : 850/900/1800/1900MHz
Electrical Specifications : 0~6 G , VSWR \leq 2. 0
Mechanical testing : Tension test 10N (1Kg)

2. Specification :



3. Picture :

